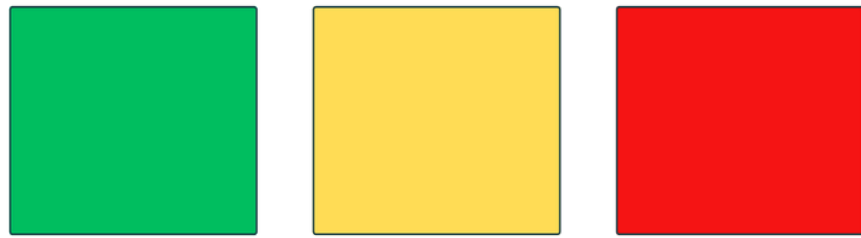


ROOF MRI



IDENTIFY • UNDERSTAND • REMEDIATE

Inspected By:



CONTENTS

OVERVIEW	03
MOISTURE REPORT	04
INSPECTION METHODS	05
MEETS & EXCEEDS	06
LIMITATION OF LIABILITY	07
CONTACT US	08





OVERVIEW

DATE: APRIL 1ST

INSPECTOR(S): EPHRAIM GLICK

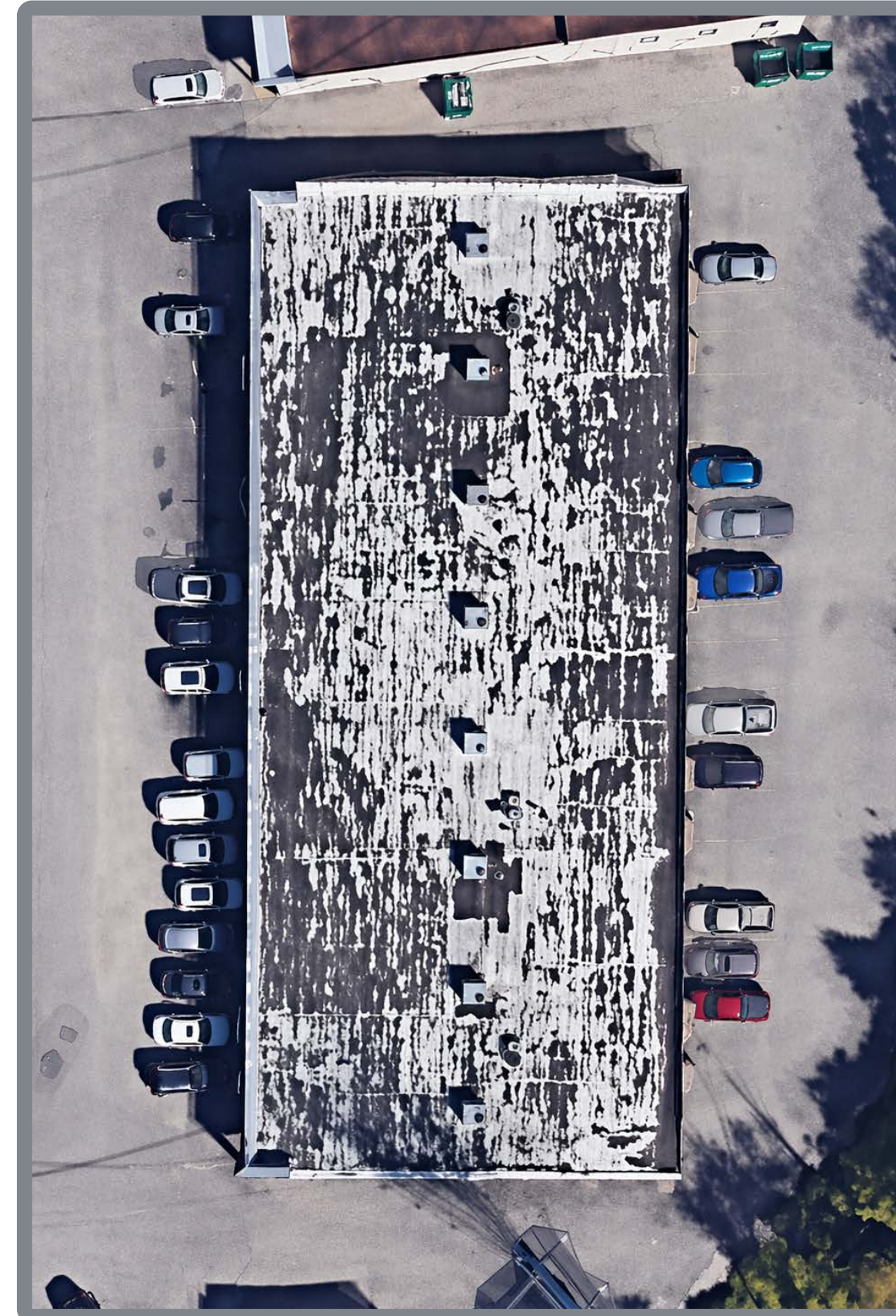
METHOD(S): **ROOF MRI**
PIN PRICK + IMPEDANCE

ROOF TYPE: MODIFIED BITUMEN

INSULATION TYPE: 2" WOOD FIBERBOARD

APPROX SF: 18,000 SF

ROOF SECTIONS: 1



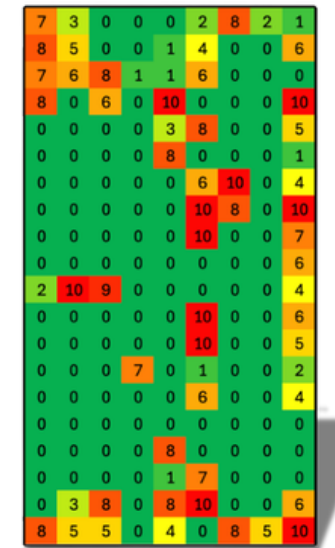
TOTAL SQUARES: 180 | 100SF EACH

MOISTURE ANALYSIS:

- WET | 2,400SF (13%) ●
- DAMP | 2,500SF (14%) ● ●
- DRY | 13,100SF (73%) ●
- UNDETERMINED | 0SF (0%) ●

COMMENTS:

A scan of this 18,000 SF roof section identifies active and developing moisture conditions across a notable portion of the insulation layer, with 13% of the scanned area classified as wet and 14% categorized as damp, bringing the combined moisture presence to 27% of the total scanned surface. The remaining 73% of the roof returned dry readings, indicating that while the majority of the system is currently stable, more than a quarter of the scanned area reflects moisture conditions that require prompt remediation. No areas were left undetermined, confirming complete scan coverage of the section. Given the combined wet and damp findings spread across this large roof section, a comprehensive dry-out plan is recommended to address the active moisture zones and prevent further migration into the surrounding dry insulation before the affected area continues to grow.



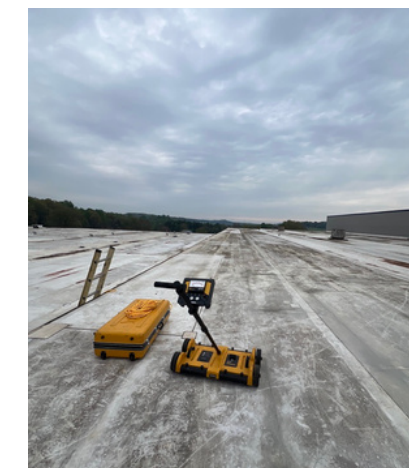
INSPECTION

METHOD(S) USED TO DETECT MOISTURE.

ROOF MRI PROCESS

Glick Roofing Systems used the most professional equipment and methods to locate and confirm moisture percentages. A Tramex DecScanner was utilized to detect moisture without penetrating the roof system. Using an Impedance Scanner is one of the primary ways to detect moisture in roofs and walls without penetrating the roof.

A Tramex MEX5 moisture probe was utilized to confirm moisture readings and to calibrate the Tramex. This is a preferred method for ensuring the non-destructive testing is as accurate as possible. Test is in accordance with ASTM Standards for non-destructive testing.





MEETS AND EXCEEDS

EVERY ASTM NON-DESTRUCTIVE TESTING STANDARD



Evaluation Area	ASTM Criteria	Roof MRI Compliance	Commentary
Calibration	Instruments must be calibrated using manufacturer specifications; calibration should be repeatable and validated.	Utilizes a 4-part calibration process including REL/WME readings, pin-prick validation, and analog matching.	Exceeds ASTM baseline. Introduces redundant analog confirmation not required by ASTM.
Measurement Grid	Spatial consistency encouraged; methods should allow reproducible location tagging.	10'x10' georeferenced grid overlay tied to satellite/aerial images and compass orientation.	Exceeds spatial documentation requirements of ASTM D6232.
Reporting	Should include location, technician, device used, calibration log, and test conditions.	Each Roof MRI Report includes: moisture classification map, technician ID, calibration photos, timestamp, compass orientation.	Fully compliant and extended. Offers digital outputs suitable for audit and legal review.
Technician Training	Recommended: documented training in methodology and interpretation of results.	Includes classroom training, rooftop training, AI-enhanced app, digital training modules, step-by-step SOPs, and certification model.	Exceeds standard with embedded digital training interface.
Environmental Controls	Must consider environmental effects (e.g., temperature, humidity) that affect measurement reliability.	Reports incorporate calibration before and during use; documentation includes environment notes when relevant.	Compliant, and introduces process resilience via in-field recalibration.
Non-Destructive Validation	Use of non-penetrating impedance tools accepted; destructive validation suggested for confirmation.	Impedance scanning validated by pin-prick spot tests (semi-destructive) and historical wet/dry insulation calibration samples.	ASTM-aligned approach with optional dual-mode validation.



IDENTIFY



UNDERSTAND



REMEDiate

